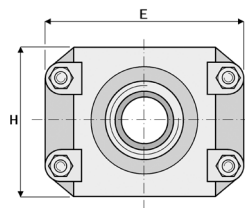
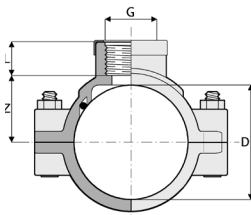


> 505



DxG	L	Z	E	H	g	n° Bolts	Bolts	Ref.	Pack	Box	Master
160x2"	28,5	88	213	137	1000	6	M8x60	1S.505.17G.00F	1	16	B
160x3"	36	88	213	137	1014	6	M8x60	1S.505.17I.00F	1	15	B
180x1 1/4"	24	115	265	171	2289	6	M10x80	1S.505.18E.00	1	8	B
180x1 1/2"	24	115	265	171	2292	6	M10x80	1S.505.18F.00	1	8	B
180x2"	24	115	265	171	2296	6	M10x80	1S.505.18G.00	1	8	B
180x3"	33	115	265	171	2310	6	M10x80	1S.505.18I.00	1	8	B
180x4"	42	115	265	171	2314	6	M10x80	1S.505.18L.00	1	6	B
200x1 1/4"	24	115	265	171	2019	6	M10x80	1S.505.21E.00	1	8	B
200x1 1/2"	24	115	265	171	2022	6	M10x80	1S.505.21F.00	1	8	B
200x2"	24	115	265	171	2026	6	M10x80	1S.505.21G.00	1	8	B
200x3"	33	115	265	171	2040	6	M10x80	1S.505.21I.00	1	8	B
200x4"	42	115	265	171	2044	6	M10x80	1S.505.21L.00	1	8	B
225x1 1/4"	24	127,5	280	173	2165	6	M10x80	1S.505.23E.00	1	7	B
225x1 1/2"	24	127,5	280	173	2145	6	M10x80	1S.505.23F.00	1	7	B
225x2"	24	127,5	280	173	2155	6	M10x80	1S.505.23G.00	1	7	B
225x3"	33	127,5	280	173	2180	6	M10x80	1S.505.23I.00	1	7	B
225x4"	42	127,5	280	173	2210	6	M10x80	1S.505.23L.00	1	7	B
250x1 1/4"	24	142	313	181	2545	6	M10x80	1S.505.26E.00	1	7	B
250x1 1/2"	24	142	313	181	2548	6	M10x80	1S.505.26F.00	1	7	B
250x2"	22,4	142	313	181	2552	6	M10x80	1S.505.26G.00	1	7	B
250x3"	33	142	313	181	2566	6	M10x80	1S.505.26I.00	1	7	B
250x4"	42	142	313	181	2570	6	M10x80	1S.505.26L.00	1	6	B
280x1 1/4"	24	171	385	190	4069	6	M10x80	1S.505.28E.00	1	3	B
280x1 1/2"	24	171	385	190	4072	6	M10x80	1S.505.28F.00	1	3	B
280x2"	24	171	385	190	4076	6	M10x80	1S.505.28G.00	1	3	B
280x3"	33	171	385	190	4090	6	M10x80	1S.505.28I.00	1	3	B
280x4"	42	171	385	190	4094	6	M10x80	1S.505.28L.00	1	3	B
315x1 1/4"	24	171	385	190	3168	6	M10x80	1S.505.33E.00	1	4	B
315x1 1/2"	24	171	385	190	3171	6	M10x80	1S.505.33F.00	1	4	B
315x2"	24	171	385	190	3175	6	M10x80	1S.505.33G.00	1	4	B
315x3"	33	171	385	190	3189	6	M10x80	1S.505.33I.00	1	4	B
315x4"	42	171	385	190	3193	6	M10x80	1S.505.33L.00	1	4	B